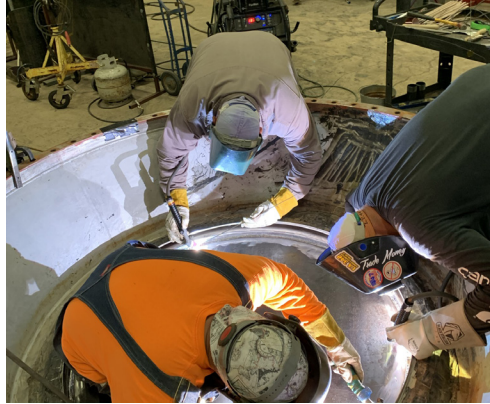
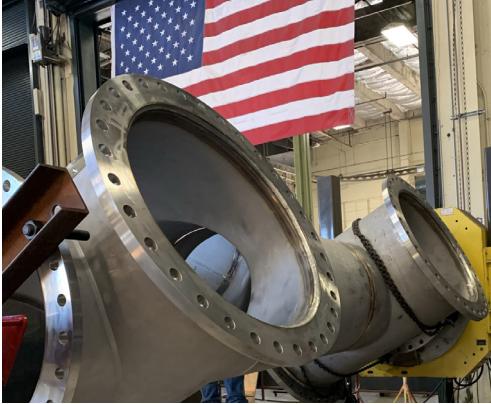


SHOP FABRICATION



Pre-fabrication can help
SAVE TIME & MONEY
on your next project



**Performance
Mechanical, Inc.**

An EMCOR Industrial Services Company

Our ASME Certified shops
can meet your piping needs

Pittsburg (925) 473-3006
Sacramento (925) 473-3164
Huntington Beach (925) 473-3139

CONTACT US TODAY

perfmech.com info@perfmech.com

Performance Mechanical manufactures a full range of tailored piping and structural components at our high-quality, value added fabrication facilities.

Our skilled welders maintain some of the highest levels of safety, quality, and productivity. We are a union code stamp shop which can deliver quality fabrication for fast paced, schedule driven projects. We have three locations to serve you in Northern and Southern California. Let our fabrication shops help save you money, increase quality, and hit productivity metrics on your next project.

Modern Facilities

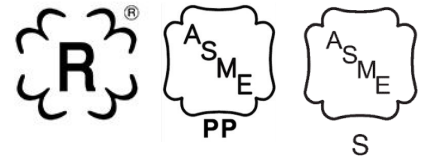
- Overhead Cranes
- Watts Saw - cut & beveler
- CNC Plasma Table
- Victaulic Roll Groover
- Welding Stations with pipe positioners

Weld Certifications & Stamps

- ASME Section VIII - Pressure Vessels
- R & S Code Stamps
- ASME Section I - Power Boilers
- B31.1 - power piping
- B31.3 - process piping
- PP Code Stamp
- ASME Section IX welder qualification
- In-house procedure qualification

Welding Capabilities

- Shielded metal arc welding (SMAW)
- Gas tungsten arc welding (GTAW)
- Gas metal arc welding (GMAW)
- Flux core arc welding (FCAW)
- Sub arc welding (SAW)
- Brazing/Soldering (OFW)
- API 1104 weld procedures
- OQ certified



Materials

- Carbon Steel
- Stainless Steel
- Chrome
- Alloy 20
- Monel
- Inconel
- Hastelloy
- Duplex
- Aluminum
- Moly

Industries Served

- Power & Energy
- Renewables
- Petrochemical
- Chemical
- Food & Beverage
- Water & Wastewater Treatment
- Commercial & Industrial

CA LICENSE #475516 TYPE A, B, C36
HI LICENSE #ABC-25121 TYPE A, B, C4
City of Los Angeles Approved Fabricator